

# RIVERHOMES

**Kenilworth Court  
Putney SW15**

**£750,000  
Leasehold**





## Kenilworth Court Putney SW15

This exquisite Victorian mansion apartment offers an abundance of light, space, and character, paired with captivating views of the River Thames from the reception room and principal bedrooms.

Spanning nearly 900 square feet, the residence combines timeless elegance with modern convenience. It features two beautifully proportioned double bedrooms, a delightful bay-fronted reception room with warm wood flooring, a bespoke kitchen designed for both style and function, and a luxurious, impeccably finished bathroom.

Set within the prestigious Kenilworth Court, a meticulously maintained mansion block, this property exudes charm and exclusivity. Positioned just moments from the tranquil banks of the Thames, it is ideally located near the artisan cafés, chic bars, and fine dining establishments of Lower Richmond Road, as well as the boutique shopping and amenities of Putney High Street.

The apartment enjoys exceptional transport links, with Putney Bridge tube station, Putney mainline station, and Putney Pier—offering scenic riverboat commutes to central London—all within a short stroll.

### KEY FEATURES

**2 double bedrooms**

**Bay-fronted reception room**

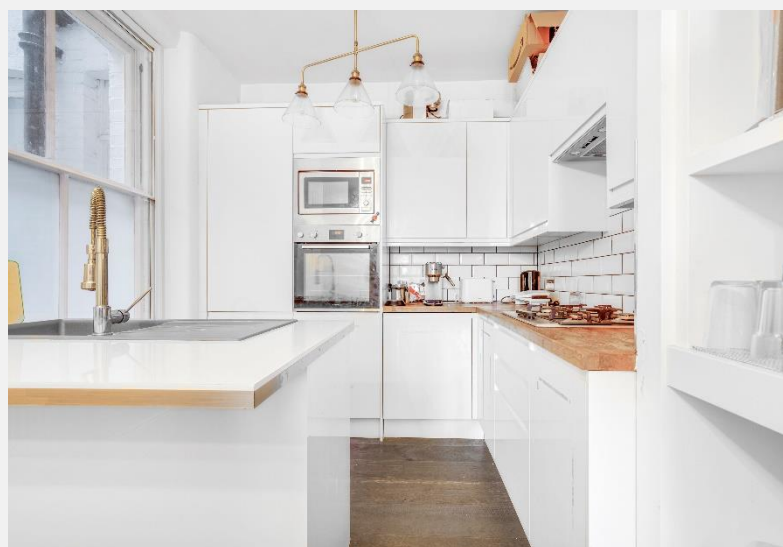
**Good size separate kitchen**

**Luxurious finished bathroom**

**Well maintained gated communal garden**

**Easy access to public transport and local shops**

**Views of the River Thames**





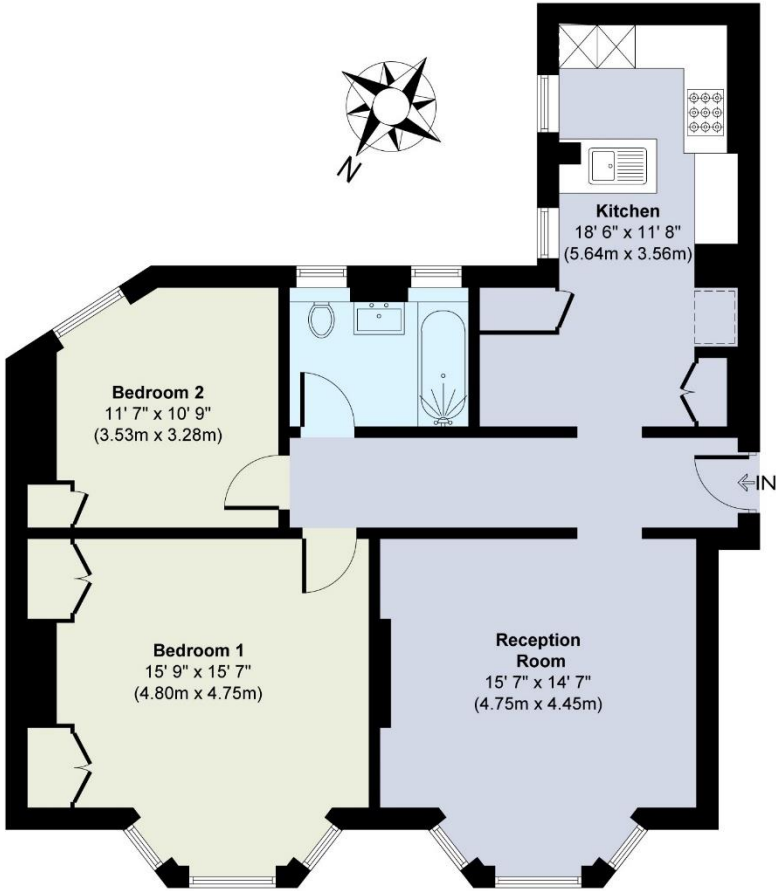


ENERGY PERFORMANCE CERTIFICATE

Score	Energy rating	Current	Potential
92+	A		
81-91	B		81 B
69-80	C	73 C	
55-68	D		
39-54	E		
21-38	F		
1-20	G		

KEY INFORMATION

Local authority:	London Borough of Wandsworth
Internal area:	895 sq. ft. / 83 sq. m.
Garden area:	Gated communal garden
No. of bedrooms:	2
Council tax:	Band E
Service charge:	£4,000 per year approx.
Lease length:	157 years remaining



First Floor

World Waterside Ltd trading as riverhomes for themselves and its clients give notice that 1: They are not authorised to make or give any representations or warranties in relation to the property either here or elsewhere, either on their own behalf or on behalf of their client or otherwise. 2: These particulars do not form part of any offer or contract and must not be relied upon as statements or representations of fact. Any areas, measurements or distances are approximate. The text, photographs and plans are for guidance only and are not necessarily comprehensive. 3: It should not be assumed that the property has all necessary planning, building regulation or other consents and any services, equipment or facilities have not been tested. 4: Lease details, service charges, ground rent (where applicable) and council tax are given as a guide only and should be checked and confirmed by your Solicitor prior to exchange of contracts. 5: They assume no responsibility and any intending purchasers or tenants must satisfy themselves by inspection or otherwise as to the correctness of each of the statements contained within these particulars. If you require clarification of any points please contact us.